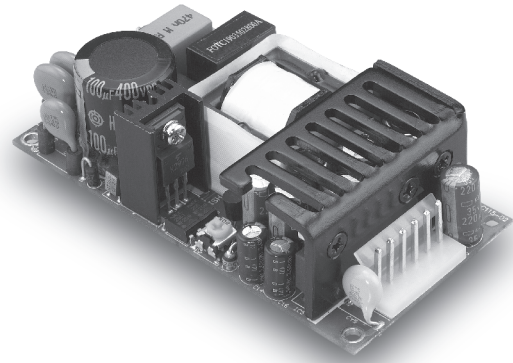


CFM40D/T

S E R I E S

40W DUAL/TRIPLE OUTPUT AC-DC OPEN FRAME



Features

- Universal Input Range
90~264VAC
- 2"x4" Size
- Industry Standard Pin Out
- Efficiency to 81%
- Meets EN61204-3 Class B and
CISPR/FCC Class B
- Short Circuit Protection

MODEL	Output Voltage	Output Current (A)			Ripple (mVp-p)	Voltage Accuracy	Line Reg.	Load Reg.	O/P Power Max.	%EFF. (Typ.)
		Min.	Rated	Max.						
CFM40D-01	5V(V1)	0.4	3.2	5.0	50	±3%	±1%	±3%	40.0W	80%
	12V(V2)	0.2	2.0	2.5	120	±4%	±2%	±5%		
CFM40D-02	5V(V1)	0.4	3.2	5.0	50	±3%	±1%	±3%	40.0W	81%
	24V(V2)	0.2	1.0	1.5	240	±4%	±2%	±5%		
CFM40T-01	5V(V1)	0.4	3.0	5.0	50	±3%	±1%	±3%	40.5W	78%
	12V(V2)	0.2	2.0	2.5	120	±4%	±2%	±5%		
	-5V(V3)	0	0.3	0.5	50	±3%	±1%	±1%		
CFM40T-02	5V(V1)	0.4	3.0	5.0	50	±3%	±1%	±3%	42.6W	78%
	12V(V2)	0.2	2.0	2.5	120	±4%	±2%	±5%		
	-12V(V3)	0	0.3	0.5	120	±3%	±1%	±1%		
CFM40T-03	5V(V1)	0.4	3.0	5.0	50	±3%	±1%	±3%	42.0W	78%
	15V(V2)	0.2	1.5	2.3	150	±4%	±2%	±5%		
	-15V(V3)	0	0.3	0.5	150	±3%	±1%	±1%		
CFM40T-04	5V(V1)	0.4	3.0	5.0	50	±3%	±1%	±3%	42.6W	78%
	24V(V2)	0.2	1.0	1.5	240	±4%	±2%	±5%		
	-12V(V3)	0	0.3	0.5	120	±3%	±1%	±1%		
CFM40T-05	5V(V1)	0.4	3.0	5.0	50	±3%	±1%	±3%	40.5W	78%
	24V(V2)	0.2	1.0	1.5	240	±4%	±2%	±5%		
	-5V(V3)	0	0.3	0.5	50	±3%	±1%	±1%		
CFM40T-06	5V(V1)	0.4	3.0	5.0	50	±3%	±1%	±3%	42.6W	78%
	24V(V2)	0.2	1.0	1.5	240	±4%	±2%	±5%		
	12V(V3)	0	0.3	0.5	120	±3%	±1%	±1%		
CFM40T-07	3.3V(V1)	0.4	5.0	7.0	100	±3%	±1%	±3%	30.0W	71%
	5V(V2)	0.2	2.0	3.5	100	±4%	±3%	±5%		
	-12V(V3)	0	0.3	0.5	120	±3%	±1%	±1%		

Specifications

INPUT SPECIFICATIONS:

Voltage 90~264Vac
 Frequency 47 to 63Hz
 Inrush Current Cold Start@25°C..... 60A max. @240Vac
 Input Current 1A max. (RMS) @115Vac
 Leakage Current 3.5mA max.

OUTPUT SPECIFICATIONS:

Rated Power for Convection Cooling 40W (CFM40T-07, 30W)
 Maximum Power with 30 CFM Forced Air 50W (CFM40T-07, 40W)
 Holdup Time 20ms typ. @115Vac
 Short Circuit..... Hiccup Mode (Auto Recover)
 Over Voltage Protection CFM40D/T..... 6V on V1(5V)
 16V/20V/30V on V2(12V/15V/24V)
 Over Voltage Protection CFM40T-07..... 6V on V1(3.3V), 9V on V2 (V5)
 Temperature Coefficient ±0.05%/°C

GENERAL SPECIFICATIONS:

Isolation Input to output = 4,242VDC
 Operating Temperature 0°C~70°C (see Derating Curve)
 Storage Temperature -20~85°C
 Humidity 93% RH max. Non-Condensing
 Cooling Natural Convection
 Switching Frequency 62.5KHz Typical
 MTBF MIL-HDBK-217F, GB, 25°C/115VAC 200K hrs min.
 Altitude 2000m
 Dimensions
 Open Frame versions 4.000x2.000x1.063 inches (101.60x50.80x27.00 mm)
 Covered versions 4.606x2.480x1.850 inches (117.00x63.00x47.00 mm)
 Weight Open Frame versions180g (0.40 Pounds)
 Covered versions 220g (0.49 Pounds)

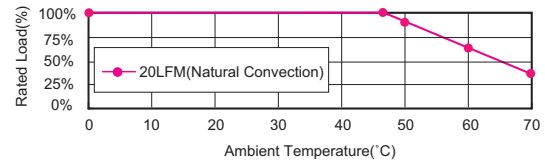
SAFETY AND EMC:

Emission and Immunity EN55022 Class B, FCC Part 15 Class B
 EN61000-6-3, EN61000-3-2, EN61000-3-3
 EN55024, EN61204-3, EN61000-6-1
 Safety IEC60950-1, EN60950-1, UL60950-1

CFM40D/T Series Derating Curve

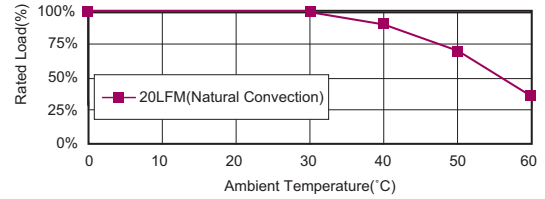
Open Frame versions:

CFM40D-01, 40D-02, 40T-01, 40T-02, 40T-03, 40T-04, 40T-05, 40T-06, 40T-07

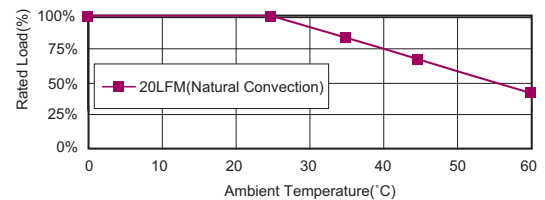


Covered versions: CFM40D/T-XX-CA

CFM40D-01, 40D-02, 40T-01, 40T-02, 40T-03, 40T-04, 40T-05, 40T-06



CFM40T-07



NOTE:

1. Voltage accuracy is set at full load and 25°C Ta.
2. Add a 0.1µF ceramic capacitor and a 10µF E.L. capacitor to output for Ripple & Noise measuring @20MHz BW.
3. Line regulation is measured from 100Vac to 240Vac with full load.
4. Load regulation is measured from 60% to 100% full load and from 60% to 20% full load (60% ± 40% full load)
5. Input connector mates with Molex housing 09-50-3031 and Molex 2878 series crimp terminal.
6. Output connector mates with Molex housing 09-50-3061 and Molex 2878 series crimp terminal.
7. Safety approvals do not apply to the Covered versions, only to the Open-Frame versions.

CFM40D/T Watt Series

All Dimensions In Inches(mm)
 Tolerance Inches: x.xxx= ±0.02
 Millimeters: x.xx= ±0.5

PIN CONNECTION	
Pin	Function
1	ACN
2	-
3	ACL

PIN CONNECTION	
Pin	Function
1	V2
2	V1
3	V1
4	GND
5	GND
6	V3

