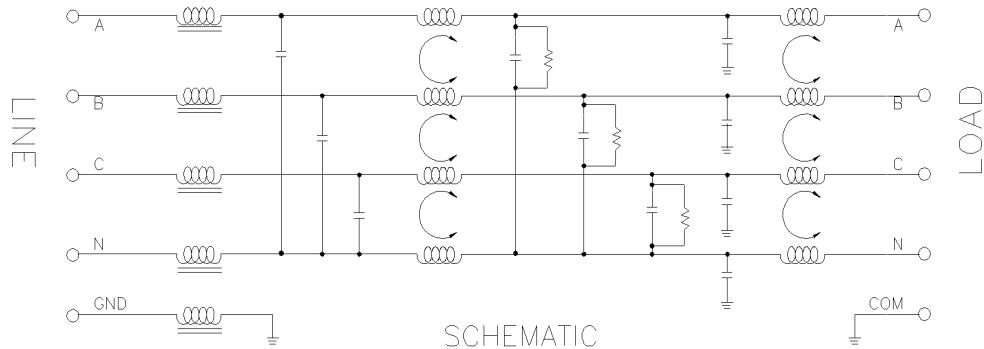


TPYBV SERIES THREE PHASE WYE 250/440 VRMS



NOTE: FOR MOUNTING OPTIONS SEE PAGE 2

FEATURES AND SPECIFICATIONS



SPECIFICATIONS

1.0 HIGHPOT RATING:

LINE-TO-GROUND: 2000 VAC
LINE-TO-LINE: 2400 VDC

2.0 MAXIMUM LEAKAGE CURRENT, 250 VAC, 60 Hz, EACH LINE TO GROUND.

1.0 mA, MAX

3.0 RATED VOLTAGES AND FREQUENCY: 250/440 VAC, 47-63 Hz

4.0 PERFORMANCE

	0.01	0.05	0.15	0.50	1.50	5.00	20.00
C/M L/G	20 dB	30 dB	65 dB	65 dB	65 dB	60 dB	65 dB
D/M L/L	15 dB	30 dB	60 dB	65 dB	65 dB	60 dB	60 dB

5.0 DIMENSIONS

PART NUMBER	RATED CURRENT AMPS											
		A	B	C	D1	D2	D3	D4	F	G	J	K
TPYBV7-4FF	7.5	7.00	4.00	4.00	7.81	3.25	---	---	1.33	0.80	.18X.37	#8-32UNC
TPYBV7-4IF	7.5	7.00	4.00	4.00	---	3.25	3.25	7.40	1.33	0.80	.18X.37	#8-32UNC
TPYBV7-4SF	7.5	7.00	4.00	4.00	---	3.25	3.25	7.40	1.33	0.80	.18X.37	#8-32UNC
TPYBV20-4FF	20	7.00	5.00	3.00	7.50	4.00	---	---	1.00	1.00	.18X.37	#8-32UNC
TPYBV20-4IF	20	7.00	5.00	3.00	---	4.00	2.00	7.25	1.00	1.00	.18X.37	#8-32UNC
TPYBV20-4SF	20	7.00	5.00	3.00	---	4.00	2.00	7.25	1.00	1.00	.18X.37	#8-323.25UNC
TPYBV30-4FF	30	8.00	5.00	4.75	9.00	4.00	---	---	1.58	1.00	.18X.37	#10-32UNC
TPYBV30-4IF	30	8.00	5.00	4.75	---	4.00	3.75	8.50	1.58	1.00	.18X.37	#10-32UNC
TPYBV30-4SF	30	8.00	5.00	4.75	---	4.00	3.75	8.50	1.58	1.00	.18X.37	#10-32UNC

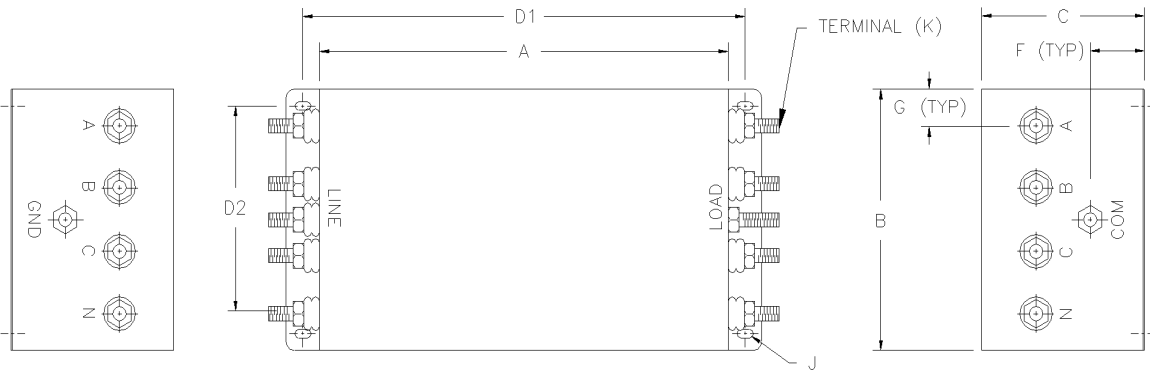
6.0 FEATURES

- * RUGGED CONSTRUCTION
- * REDUCES RADIATED AND CONDUCTED EMISSIONS FROM VFD
- * SUITABLE EITHER FOR WYE OR DELTA CONNECTION

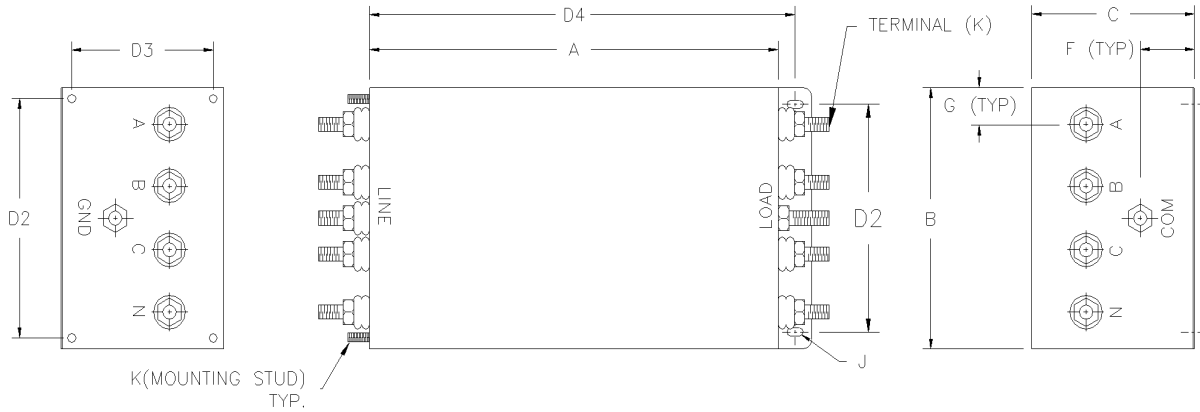
TPYBV SERIES

THREE PHASE WYE

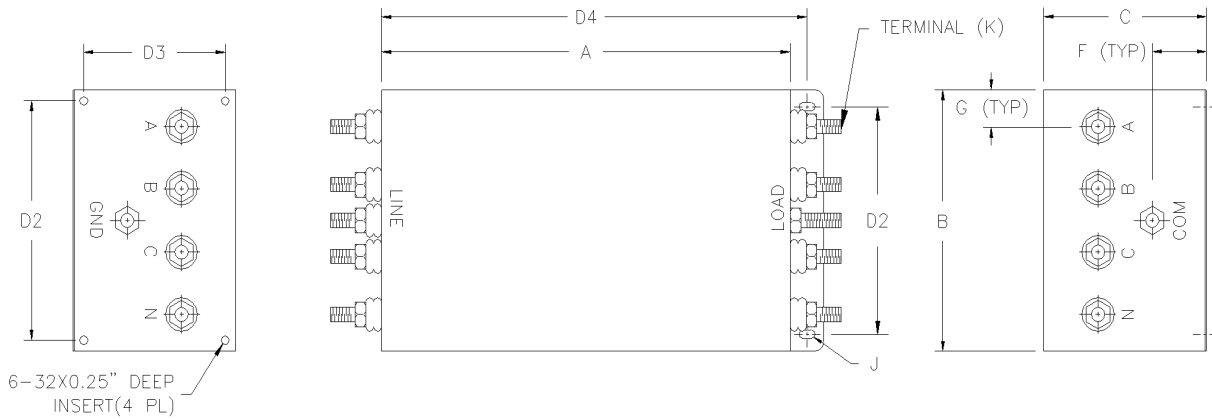
250/440 VRMS



FF OPTION



SF OPTION



IF OPTION