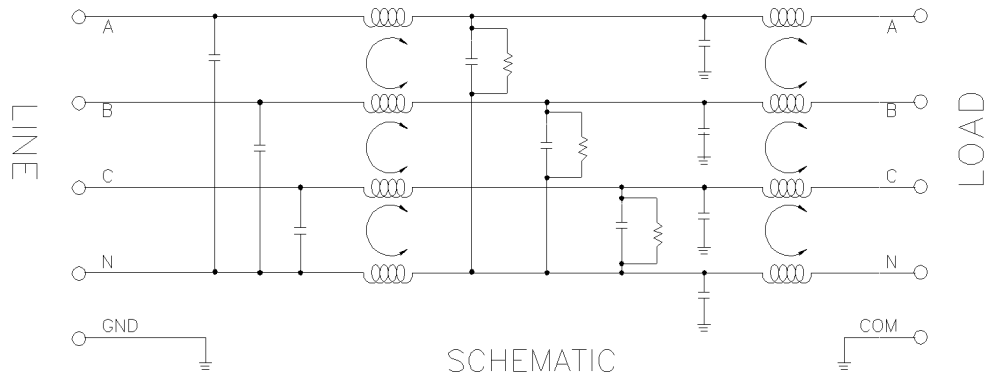


TPYB SERIES

THREE PHASE WYE

250/440 VRMS



SCHMATIC

NOTE: FOR MOUNTING OPTIONS SEE PAGE 2

FEATURES AND SPECIFICATIONS



SPECIFICATIONS

1.0 HIGHPOT RATING:

LINE-TO-GROUND: 2000 VAC
LINE-TO-LINE: 2400 VDC

2.0 MAXIMUM LEAKAGE CURRENT, 250 VAC, 60 Hz, EACH LINE TO GROUND.

15 AMPS; 0.5mA, MAX
30 AMPS; 1.0mA, MAX
45 AMPS; 1.0mA, MAX
60 AMPS; 1.0mA, MAX

3.0 RATED VOLTAGES AND FREQUENCY:

250/440 VAC, 47-63 Hz

4.0 PERFORMANCE

	0.05	0.15	0.50	1.50	5.00	20.0
C/M L/G	10 dB	50 dB	55 dB	65 dB	65 dB	65 dB
D/M L/L	20 dB	50 dB	50 dB	60 dB	60 dB	60 dB

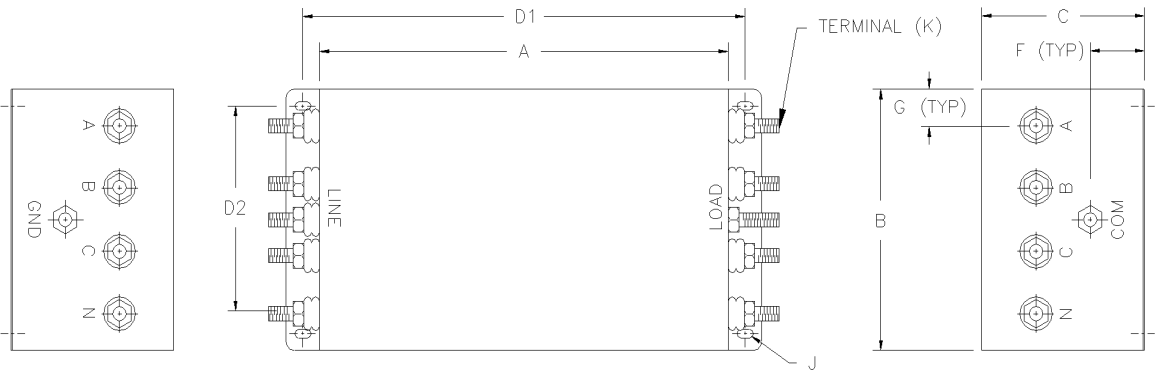
5.0 DIMENSIONS

PART NUMBER	RATED CURRENT	A	B	C	D1	D2	D3	D4	F	G	J	K
		TPYB7.5-4FF	7.5	7.00	4.00	4.00	7.81	3.25	---	---	1.33	0.80
TPYB7.5-4IF	7.5	7.00	4.00	4.00	---	3.25	3.25	7.40	1.33	0.80	.18X.37	#8-32UNC
TPYB7.5-4SF	7.5	7.00	4.00	4.00	---	3.25	3.25	7.40	1.33	0.80	.18X.37	#8-32UNC
TPYB15-4FF	15	8.00	5.00	4.75	9.00	4.00	---	---	1.58	1.00	.25X.50	#8-32UNC
TPYB15-4IF	15	8.00	5.00	4.75	---	4.00	3.75	8.50	1.58	1.00	.25X.50	#8-32UNC
TPYB15-4SF	15	8.00	5.00	4.75	---	4.00	3.75	8.50	1.58	1.00	.25X.50	#8-32UNC
TPYB30-4FF	30	12.00	6.50	4.75	13.00	5.50	---	---	1.58	1.25	.31X.62	#10-32UNC
TPYB30-4IF	30	12.00	6.50	4.75	---	5.50	3.75	12.50	1.58	1.25	.31X.62	#10-32UNC
TPYB30-4SF	30	12.00	6.50	4.75	---	5.50	3.75	12.50	1.58	1.25	.31X.62	#10-32UNC

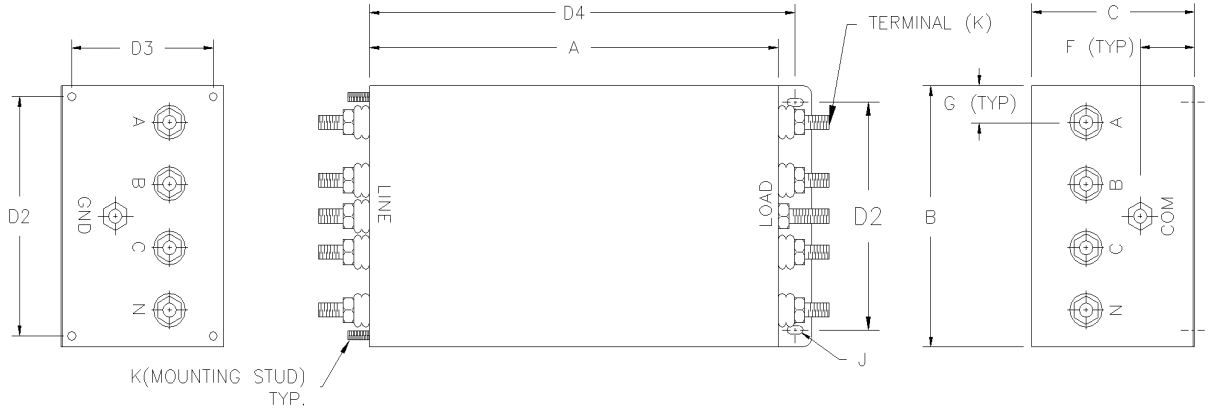
6.0 FEATURES

- * RUGGED CONSTRUCTION
- * REDUCES RADIATED AND CONDUCTED EMISSIONS FROM VFD
- * SUITABLE EITHER FOR WYE OR DELTA CONNECTION

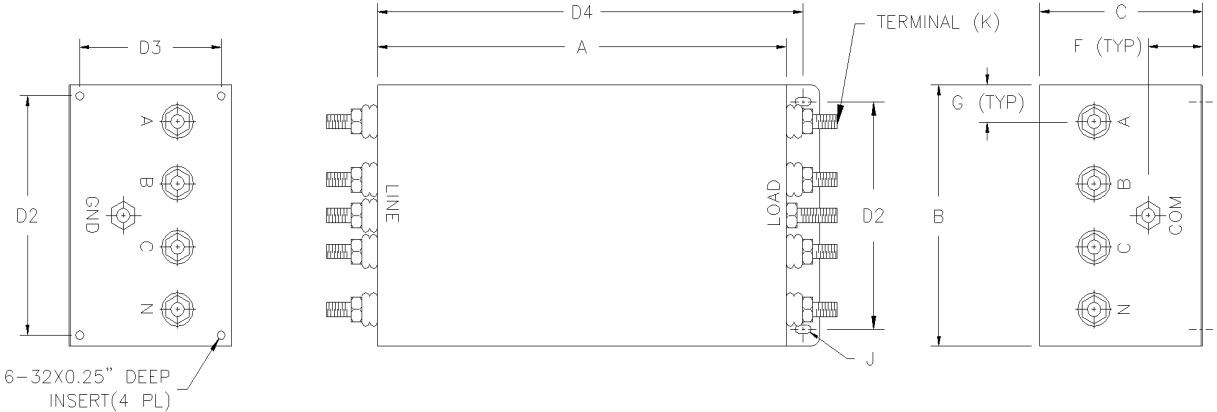
TPYB SERIES THREE PHASE WYE 250/440 VRMS



FF OPTION



SF OPTION



IF OPTION