

# High Current - Single Phase K Series



## Features & Specifications

### Specifications

- 1.0 Maximum Leakage Current, Each  
Line-To-Ground @115 VAC, 60 Hz, 0.5 mA  
@230 VAC, 60 Hz, 1.0 mA
- 2.0 High-pot Rating (One Minute)  
Line-To-Ground: 2000 VAC  
Line-To-Line: 1500 VDC
- 3.0 Operating Frequency: 47-63 Hz
- 4.0 Rated Voltage: 115/250 VAC

### 5.0 Performance

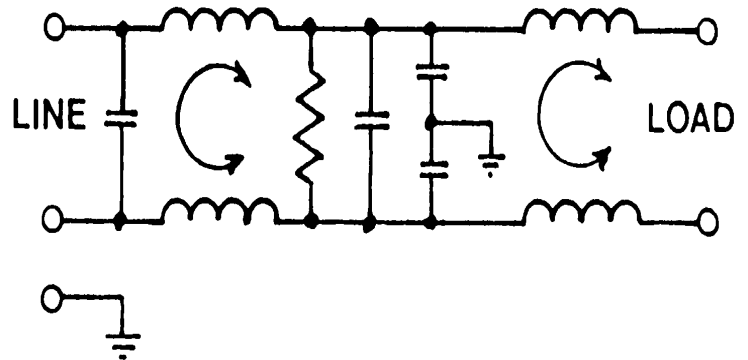
	Current Rating	Frequency - MHz					
		.05	.15	.50	1.50	5.00	20.00
(L/L) Amp	15-45	10 dB	50 dB	65 dB	65 dB	65 dB	65 dB
(L/G) Amp	15-45	30 dB	60 dB	65 dB	65 dB	65 dB	65 dB

### Applications

- Large Hard-Disk Systems
- Large Computer Systems
- Large External Floppy Systems
- Process Control Equipment
- Motor Control Systems
- Systems With Switching Power Supplies

### Features

- Superior Suppression of Line-Line and Line-Ground Interference
- Current Ratings of 15, 20, 30, and 45 Amps are available
- The Series offers Input and Output Bolt Terminations



Dimensions					
Model	Current Rating (amps)	A NOM	B NOM	C NOM	D NOM
K15-4	15	3.06	2.88	2.00	3.62
K20-4	20	3.88	3.31	1.50	3.75
K30-4	30	4.25	3.00	2.75	4.87
K45-4	45	8.00	5.00	4.00	8.50

