

# K Series



## Features & Specifications

### SPECIFICATIONS

- 1.0 MAXIMUM LEAKAGE CURRENT, EACH  
 LINE TO GROUND @ 115 VAC, 60 Hz, 0.5 mA  
 @ 250 VAC, 60 Hz, 1.0 mA
- 2.0 HIGHPOT RATING (ONE MINIUTE)  
 LINE TO GROUND: 2000 VAC  
 LINE TO LINE: 1500 VDC

3.0 OPERATING FREQUENCY: 47-63 Hz

4.0 RATED VOLTAGE: 115/230 VAC

### 5.0 PERFORMANCE

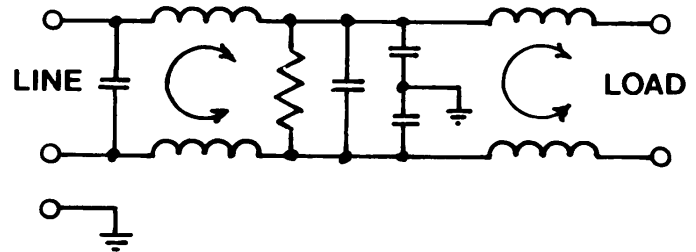
	CURRENT RATING	FREQUENCY-MHz					
		.05	.15	.50	1.50	5.00	20.00
(L/L)	1-10 AMP	10dB	50dB	65dB	65dB	65dB	65dB
(L/G)	1-10 AMP	30dB	60dB	65dB	65dB	65dB	65dB

### APPLICATIONS

- **HARD-DISK SYSTEMS**
- **SMALL COMPUTER SYSTEMS**
- **EXTERNAL FLOPPY SYSTEMS**
- **PROCESS CONTROL EQUIPMENT**
- **COMMUNICATIONS SYSTEMS**
- **SYSTEMS WITH SWITCHING POWER SUPPLIES**

### FEATURES

- **SUPERIOR SUPPRESSION OF LINE-LINE AND LINE-GROUND INTERFERENCE**
- **CURRENT RATINGS OF 1, 3, 5, 6, AND 10 AMPS ARE AVAILABLE**
- **THE SERIES OFFER TWO DIFFERENT TERMINAL STYLES**



### DIMENSIONS

PART #	CURRENT RATING (AMPS)	A NOM	B NOM	C NOM	D NOM
K1-3	1	2.5	2.0	1.5	2.94
K1-10E	1	2.5	2.0	1.5	2.94
K3-3	3	2.5	2.0	1.5	2.94
K3-10E	3	2.5	2.0	1.5	2.94
K5-3	5	2.5	2.0	1.5	2.94
K5-10E	5	2.5	2.0	1.5	2.94
K6-3	6	2.88	2.25	1.5	3.37
K6-10E	6	2.88	2.25	1.5	3.37
K10-3	10	2.88	2.25	1.5	3.37
K10-10E	10	2.88	2.25	1.5	3.37

PDF Created By Current Solutions, Inc.

