

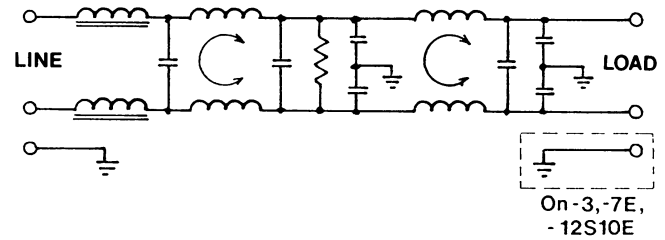
MA Series



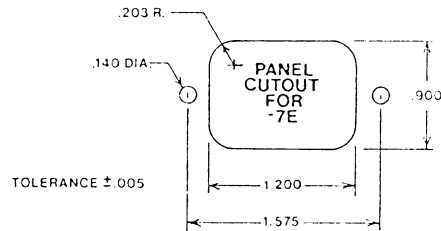
Features & Specifications

SPECIFICATIONS

- 1.0 MAXIMUM LEAKAGE CURRENT, EACH
 LINE TO GROUND @ 115 VAC, 60 Hz, 50 uA
 @ 230 VAC, 60 Hz, 100 uA
- 2.0 HIGHPOT RATING (ONE MINUTE)
 LINE TO GROUND: 2000 VAC
 LINE TO LINE: 1500 VAC
- 3.0 OPERATING FREQUENCY: 47-63 Hz
- 4.0 RATED VOLTAGE: 115/230 VAC
- 5.0 PERFORMANCE



CURRENT RATING	FREQUENCY-MHz									
	.01	.02	.05	.15	.50	1.0	5.0	10.0	30.0	
(L/G) 3-20 AMP	25 dB	30 dB	40 dB	60 dB	65 dB	60 dB	50 dB	50 dB	50 dB	
(L/L) 3-20 AMP	20 dB	25 dB	40 dB	65 dB	65 dB	65 dB	60 dB	60 dB	60 dB	



APPLICATIONS

- MEDICAL PATIENT CARE EQUIPMENT
- SYSTEMS UTILIZING SMPS
- SWITCHING POWER SUPPLIES
- UL544 EQUIPMENT
- DENTAL EQUIPMENT

FEATURES

- SYSTEMS FCC "A" AND VDE "A" EMISSION COMPLIANCE
- LOW LEAKAGE CURRENT - HIGH PERFORMANCE
- COMPACT IN SIZE
- CURRENT RATINGS OF 3, 6, 10, 15, AND 20 AMPS ARE AVAILABLE
- THE SERIES OFFER FIVE DIFFERENT TERMINAL STYLES

DIMENSIONS

PART #	CURRENT RATING (AMPS)	A NOM	B NOM	C NOM	D NOM
MA3-3	3	2.00	2.00	1.50	2.37
MA3-7E	3	2.88	2.13	1.50	1.57
MA3-10E	3	2.00	2.00	1.50	2.37
MA3-12S10E	3	2.50	2.54	1.05	N/A
MA6-3	6	3.87	3.31	1.75	4.30
MA6-7E	6	3.87	3.31	1.75	4.30
MA6-10E	6	3.87	3.31	1.75	4.30
M10-3	10	5.25	2.00	2.75	5.62
M10-10E	10	5.25	2.00	2.75	5.62
MA15-4	15	5.00	4.50	2.00	5.50
MA20-4	20	5.00	4.50	2.00	5.50

