

TSP1 SERIES

1 Watt, 1000VDC Isolation

DC-DC CONVERTER

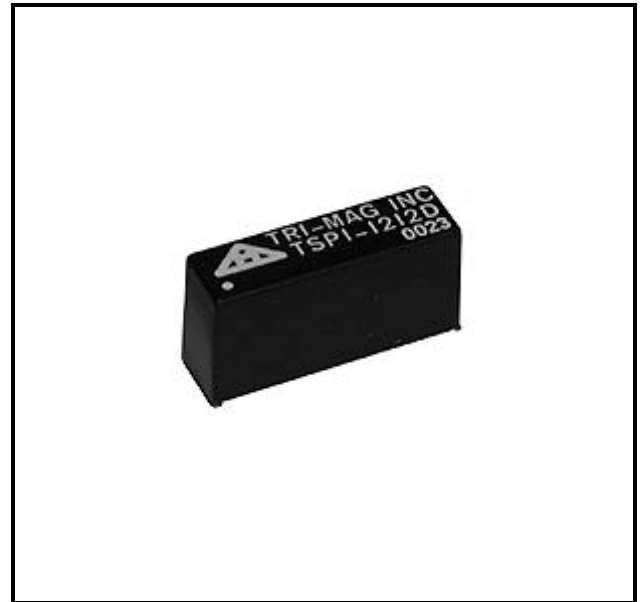
SIP Type

FEATURES

- PCB Mountable
- High Stable Regulated Output
- Thermally Conductive Encapsulate
- 100% Burn-In And Triple Tested
- MTBF > 400,000 Hours

APPLICATIONS

- Local Area Network
- Isolation Devices
- Telecommunications
- Industrial And Testing Equipment
- Battery-Powered Equipment
- Medical Equipment
- Distributed Power Equipment



ELECTRICAL SPECIFICATIONS

Input Voltage Range	± 5%
Output voltage Accuracy	± 5%
Load Regulation	± 10%
Line Regulation	± 10%
Ripple & Noise	50mV p-p for 5V, 1% for other voltages
Short Circuit Protection	Short Term, (10 sec. max.)

GENERAL SPECIFICATIONS

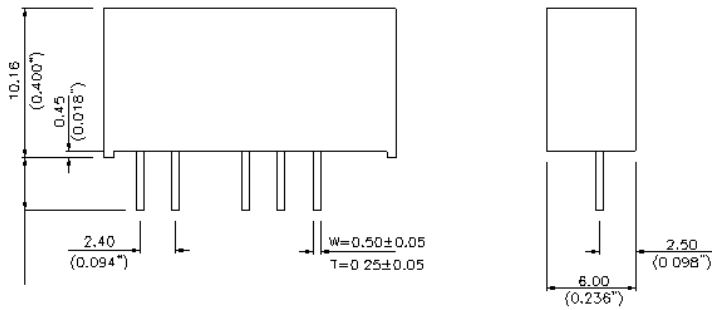
Efficiency (at full load)	70% typical
Isolation Voltage	1000VDC
Operating Frequency	100KHz min.
Operating Temperature	-25°C to 70°C
Storage Temperature	-40°C to +100°C
Isolation Resistance	10 ⁹ Ohms, min.
weight	0.1 Oz. (2.4 grams)
Case Material	Non-conductive Plastic

TSP1 SERIES SPECIFICATIONS

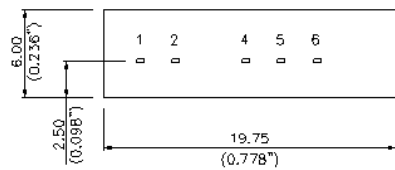
Model-Type	Input Voltage (Vdc)	Input Current mA (typ)		Output Voltage (Vdc)	Output Current mA (max)
		No Load	Full Load		
TSP1-0505D	5	50	285	±5	±100
TSP1-0509D	5	50	265	±9	±56
TSP1-0512D	5	50	265	±12	±42
TSP1-0515D	5	60	265	±15	±34
TSP1-1205D	12	25	120	±5	±100
TSP1-1209D	12	25	110	±9	±56
TSP1-1212D	12	20	110	±12	±42
TSP1-1215D	12	20	110	±15	±34
TSP1-0505S	5	30	285	5	200
TSP1-0509S	5	30	265	9	110
TSP1-0512S	5	30	265	12	75
TSP1-0515S	5	30	265	15	60
TSP1-1205S	12	20	120	5	200
TSP1-1209S	12	20	110	9	110
TSP1-1212S	12	20	110	12	80
TSP1-1215S	12	20	110	15	68

D: Dual Output S: Single Output

Specifications subject to change without notice.



Pin Connections		
Pin	Single	Dual
1	+ Input	+ Input
2	- Input	- Input
4	- Output	- Output
5	No Pin	Common
6	+ Output	+ Output



NOTES:
UNIT mm±0.25(INCH±0.01)

