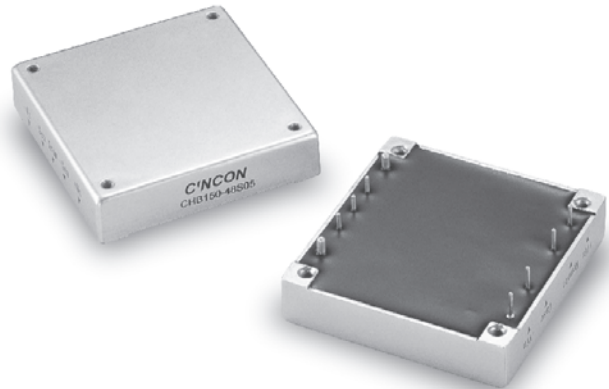


CHB150

S E R I E S

75-150 WATT DC-DC CONVERTERS SINGLE OUTPUT



Features

- 75-150W Isolated Output
- Efficiency to 89%
- 500KHz Switching Frequency
- 2 : 1 Input Range
- Regulated Outputs
- Continuous Short Circuit Protection
- Five-Sided Metal Case
- Half-Brick size meet industrial standard
- CE Mark Meets 2004/108/EC
- UL60950-1 Approval
- Without Tantalum Capacitor inside (V2.X Only, with T_C Label)

MODEL NUMBER	INPUT VOLTAGE	OUTPUT VOLTAGE	OUTPUT CURRENT		INPUT CURRENT		% EFF.	Capacitor Load max.
			MIN.	MAX.	NO LOAD	FULL LOAD		
CHB150-48S25	36-75 VDC	2.5 VDC	0 mA	30 A	25 mA	2 A	77	30000 μ F
CHB150-48S33	36-75 VDC	3.3 VDC	0 mA	30 A	25 mA	2.5 A	82	30000 μ F
CHB150-48S05	36-75 VDC	5 VDC	0 mA	30 A	25 mA	3.6 A	86	30000 μ F
CHB150-48S12	36-75 VDC	12 VDC	0 mA	12.5 A	25 mA	3.5 A	89	12500 μ F
CHB150-48S15	36-75 VDC	15 VDC	0 mA	10 A	25 mA	3.5 A	89	10000 μ F
CHB150-48S24	36-75 VDC	24 VDC	0 mA	6.25 A	25 mA	3.5 A	89	62500 μ F

NOTE: 1. Nominal Input Voltage 48 VDC

