

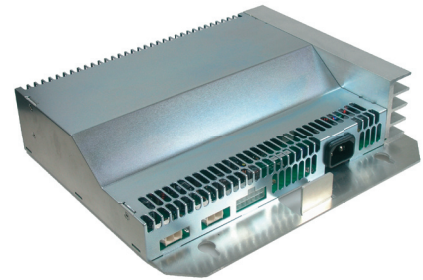
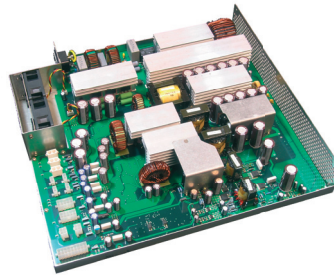
Power Supplies for banking systems

solved.
www.aptronic.de



Description

The various power supplies provide multiple outputs which are switchable via enable signal.



Ambient Conditions

- operating temperature: 5 °C – 55 °C
- storage & transport temperature: -25 °C – 70 °C

Features

- protection for all outputs against short-circuit, overcurrent and overvoltage
- fan-failure detection
- controlled fan speed
- MTBF over 150.000 @ 25 °C
- active power factor correction
- generation of stand-by and seperately switched voltages
- RoHS confirmed

 APtronic US Headquarter
Naples, Florida - USA

Safety

- EN 60950-1 (incl. all country specific differences)
- IEC 60950
- UL / CSA 60950
- BSMI-standard CNS 14336
- IEC / EN 60950-2.5

Mechanics

- fire protected housing
- housing protected against rust and oxidation
- dimensions (general, but usually customized):
height 55mm–65mm, length 240mm–400mm,
width 200–300mm

 APtronic AG Headquarter
Bad Sassendorf, Germany

Input

- input voltage: 90 – 264 VAC, 47 – 63 Hz

Output

The power supply provides multiple switchable DC-outputs, which can customized according to the specific requirement.

 Production site
Dongguan, China

APtronic AG

Your Partner for customized Power Supplies

APtronic AG

An der Helle 26
D-59505 Bad Sassendorf - Lohne
Germany

Phone +49 (0) 2927-9194-0

Fax +49 (0) 2927-9194-50

info@aptronic.de

 **APtronic**
Aktiengesellschaft
Adaptive Power Solutions