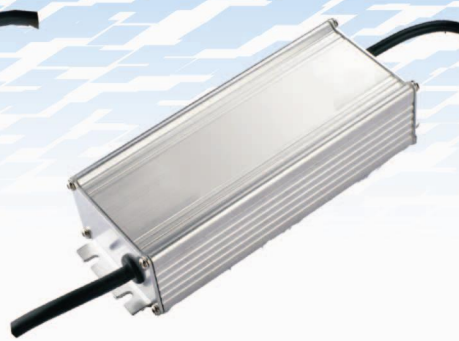
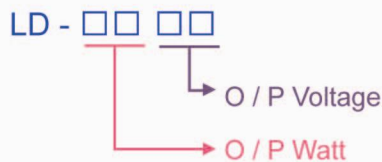
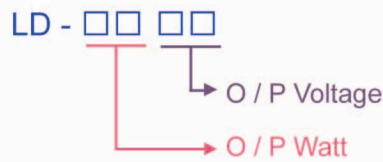




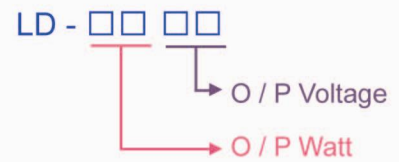
**65 Watt LED Driver**



**100 Watt LED Driver**



**120 Watt LED Driver**



65 W Series	Model	O/P Voltage	O/P Current	Watt	Drop Voltage Range	Efficiency
	LD65-15	15V	4.30A	65 W	11.3V~15V	>87%
	LD65-20	20V	3.25A	65 W	15.0V~20V	>87%
	LD65-24	24V	2.70A	65 W	18.0V~24V	>87%
	LD65-36	36V	1.80A	65 W	27.0V~36V	>87%
	LD65-48	48V	1.35A	65 W	36.0V~48V	>87%

100 W Series	Model	O/P Voltage	O/P Current	Watt	Drop Voltage Range	Efficiency
	LD100-15	15V	6.66A	100 W	11.3V~15V	>87%
	LD100-20	20V	5.00A	100 W	15.0V~20V	>87%
	LD100-24	24V	4.16A	100 W	18.0V~24V	>87%
	LD100-36	36V	2.77A	100 W	27.0V~36V	>87%
	LD100-48	48V	2.08A	100 W	36.0V~48V	>87%

120 W Series	Model	O/P Voltage	O/P Current	Watt	Drop Voltage Range	Efficiency
	LD120-15	15V	8.0A	120 W	11.3V~15V	>87%
	LD120-20	20V	6.0A	120 W	15.0V~20V	>87%
	LD120-24	24V	5.0A	120 W	18.0V~24V	>87%
	LD120-36	36V	3.3A	120 W	27.0V~36V	>87%
	LD120-48	48V	2.5A	120 W	36.0V~48V	>87%

Input		Electrical		Environmental	
Voltage	100-240 VAC 50~60Hz	Topology	Switching Flyback	Operating Temperature	-25 to+50°C
AC Current	1.0A Max. for 65W 1.4A Max. for 100W 1.7A Max. for 120W	Dielectric Withstand	I/P-O/P:3750VAC I/P-FG:1.88KVAC O/P-FG:0.5KVAC	Storage Temperature	-40 to+80°C
Inrush Current	Less Than 60A at 230V for 65W Less Than 80A at 230V for 100 & 120 W	Isolation Resistance	I/P-O/P, I/P-FG, O/P-FG:100M Ohms/ 500VDC/25°C/70%RH	Relative Humidity	Operating:20 to 100% RH Storage:10 to 95% RH
Output		Leakage Current	3.5mA Max.	Cooling	Natural Convection Cooling
Current	± 6% Output Rated Current (Constant Current)	Harmonic Current	Compliance to EN61000-3-2 Class C EN61000-3-3	Mechanical	
Ripple	5% Vp-p Max. for Output Voltage @ Full Load	EMS Immunity	Compliance to EN61000-4-2,3,4,5,6,8,11	Case Dimension	L158 × W53 × H36 (mm) ( Ref. ) For 65 W
Transient Response	0.5mS for 50% Load Change Typical	MTBF	300,000 Calculated Hours at 25°C, by Telcordia SR-332		L149 × W62 × H39 (mm) ( Ref. ) For 100 W
Holdup Time	10mS @ Full Load			L193 × W67 × H45 (mm) ( Ref. ) For 120 W	
Protection	Short Circuit Protection/ Over Voltage Protection 110%~150%			Weight	65W : 500g/ 100W : 700g / 120W : 890g ( Ref. )